

Human Machine Interface

HMI Display Panel

Product Catalog



HOLLYSYS AUTOMATION TECHNOLOGIES



HollySys Automation Technologies is a leading provider of automation and control technologies and applications in China that enables its diversified industry and utility customers to improve operating safety, reliability, and efficiency. Founded in 1993, HollySys has approximately 2,400 employees with 9 sales centers and 13 service centers in 21 cities in China and serves over 1700 customers in the industrial, railway, subway & nuclear industries. Its proprietary technologies are applied in product lines including Distributed Control System (DCS) and Programmable Logic Controller (PLC), high-speed railway Train Control Center (TCC) and Automatic Train Protection (ATP), subway supervisory and control platform (SCADA), and nuclear conventional island automation and control products. HollySys is the largest SCADA systems supplier to China's subway automation market, and is the only certified domestic automation control systems provider to the nuclear industry in China. HollySys is also one of only five automation control systems and products providers approved by China's Ministry of Railways in the 200km to 250km high-speed rail segment, and is one of only two automation control systems and products providers approved in the 300km to 350km high-speed rail segment.

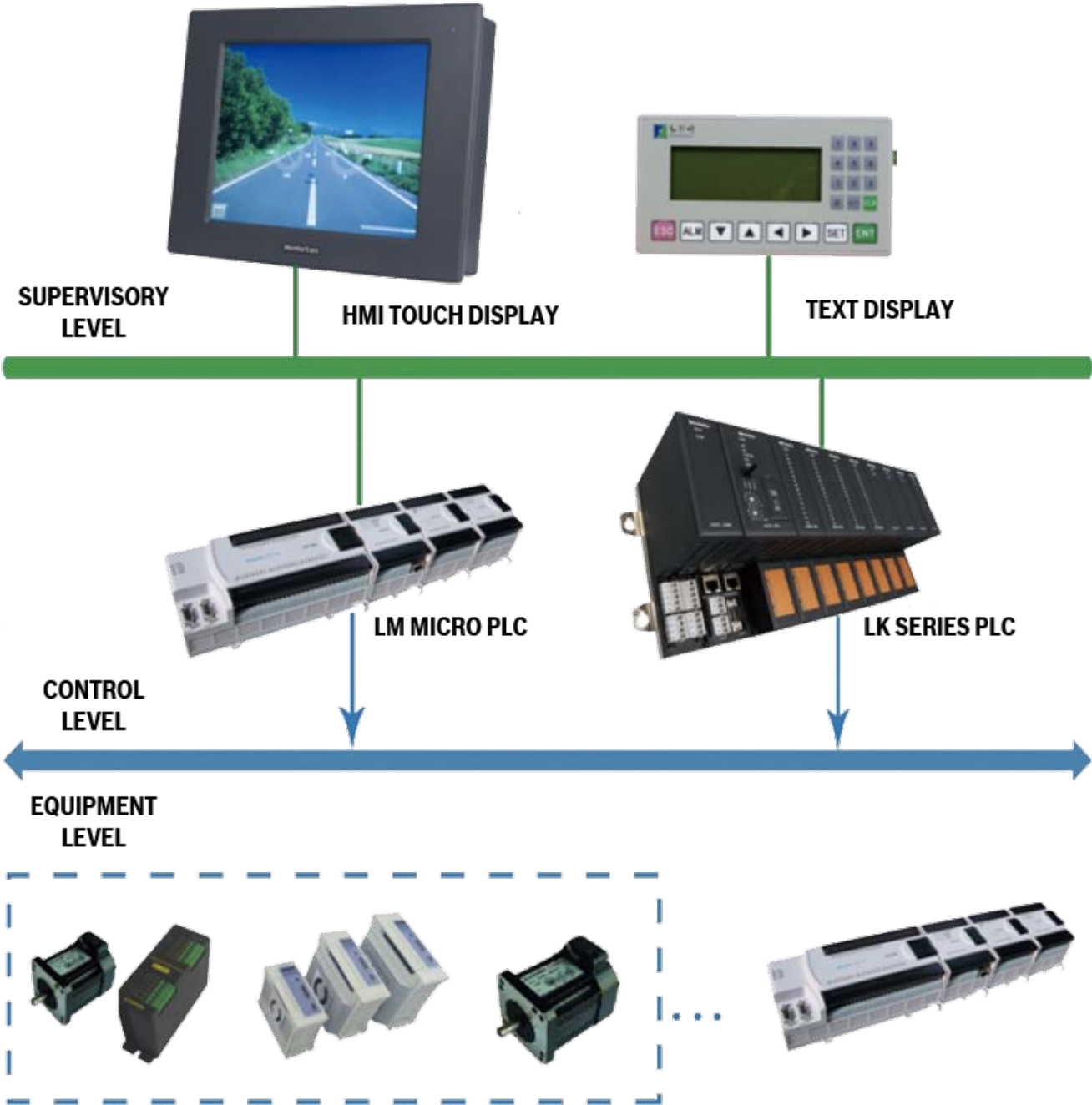
HollySys has achieved a wealth load of automation and control experience in the multiple business sectors such as Electric Power, Renewable Energy, Chemical, Petrochemical, Cement Processing, Mining and Metal Processing, Environment Protection, Pulps and Papers, Factory Machinery and Manufacturing, Railway and Subway, and Nuclear Power Instrumentation and Control. For the past 16 years, the HollySys name has always been standing as a symbol of quality and reliability in China. HollySys offers a wide range of automation and control products from PLCs to DCS to help you find the solution for any automation and process control application. Through our sustainable business and continuous development in the area of automation, we are able to provide users with a complete and total automation solution for the industries process sectors.

Our corporate mission is to be one of the major platform providers in Automation and Control with innovative technological products and solution back by the highest quality of services and support. We hope to utilize our expertise in the arena of automation technology for better work, life, and environment. We are now the global supplier of choice for innovative technology backed by the highest level of service and support. When you need products and solutions you can rely on, choose HollySys.



Automation Technology for Better Work, Life, and Environment

INDUSTRIAL AUTOMATION SOLUTION with HOLLYSYS PLC and HMI



HT6000 TOUCH SERIES HMI

Open Secure Real-time

More and more customers demand of HMI products featuring powerful functions, more convenient operation, quick response speed, and lower cost. The HT6x00 series of HMI products are designed to meet customer requirements. It derives from our consistent efforts to improve HMI touch screen and represents one of the many high-performance products for industrial applications. The HT6x00 series adopts the 32-bit RISC CPU, capable of calling complicated instructions and satisfying the requirements of most customers. It can communicate directly with many PLC, while no special program is required for data transfer with these PLCs. In addition, it supports such functions as online simulation, super-large storage space for user configurations, and macros compatible with the standard C language. It can perform on-site data collection, processing, monitoring, and output in a quick, effective, and secure way.



Hardware Introduction

Standard Configuration
Two high-speed serial ports
One USB-client port
One printer port

USB download greatly accelerates the download speed of user configurations.



Connected to printer with parallel port, Provide stable and smooth printing.

Supporting the connection mainstream ink-jet and laser printers and mini printers.



The traditional HMI uses a serial port to download, with the maximum download speed is about 11.5K bytes/s. HT6x00 uses USB1.1 port to download data from a device, with a speed as high as 100K bytes/s, which greatly improves the configuration download speed.

Supporting simultaneous communications via multiple serial ports.

HT6x00 series support communication connection in RS232, RS485 and RS422 modes. The two communication ports of the standard hardware can support different PLC communication protocols at the same time and can be connected to different controllers. The two ports are completely independent. The PLC communication failure of one port will not affect the communication of the other port, featuring high reliability.



Fuse to ensure the safety of machine in case of emergencies.



Software Highlights

Simple and user-friendly programming interface
Quick to implement ideal functions

Operation window

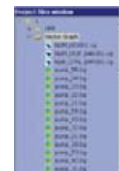
A simple and practical platform for project design and editing

- Completing all functions from editing components library and simulation compilation, to download.
- Browse various project information and make better adjustment in time.

Project file window

Facilitate in modifying components library

- Click an image library file, and the user can browse and edit the file.
- Visual understanding of the HMI quantity used.



Menu bar

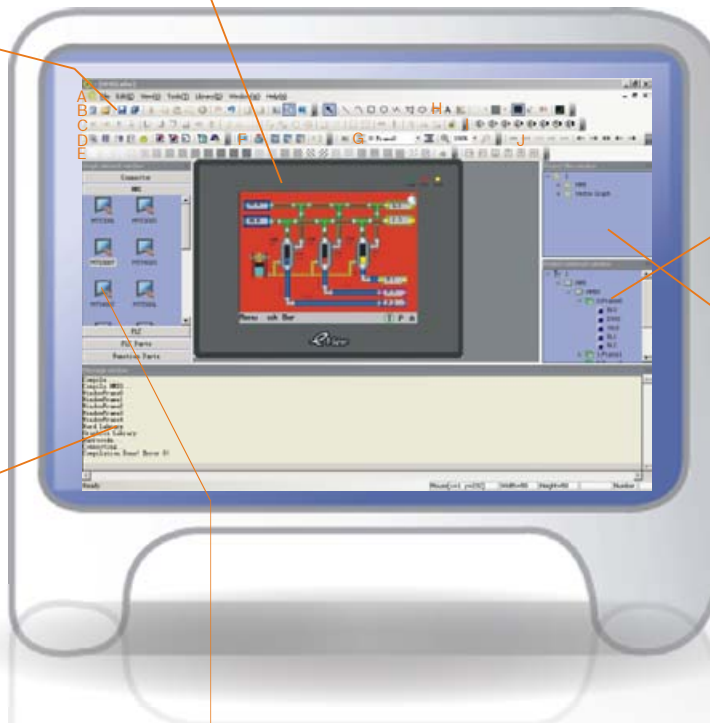
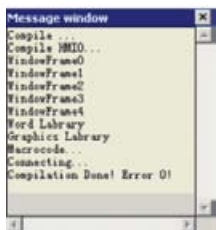
True color icon, visual, and convenient navigation

- Familiar icon style for most user's, easy to use.
- Simple and visual function

Compilation Information window

Display compilation progress

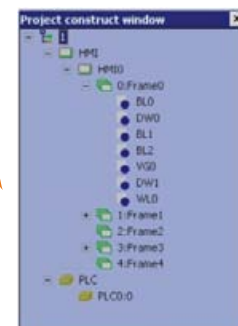
- After compilation display, the user can download files.



Project structure window

Master the conditions of the entire project

- Master the HMI, HMI components, and PLC type used for the entire project.



Components library window

Five components libraries, meeting design requirements



Communication connection

Touch screen

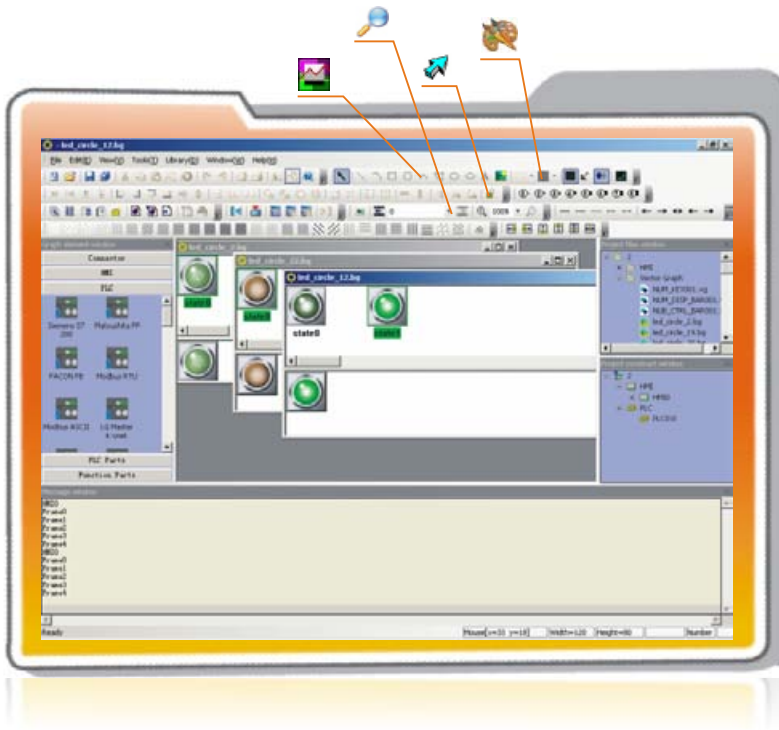
PLC

PLC components

Functional components





C Onfiguration

Design Expert



Lead true color fashion

Powerful vector graphic function, supporting drawing of arcs, sectors, scales and pointers at any angle.

- Eight line width options 
- three-level zoom-in/zoom-out display 
- Supporting drawing of various vector-based image 
- user-defined color filling in multiple modes 



Password protection

Three different authority levels, authorized operators can execute necessary setting and operations according to their authority level. The security performance of the system is greatly enhanced.

Multi-language application environment

Any language supported by Windows OS can be displayed on the panel. The user can use up to 4 languages within a project, which makes it possible for global users to share their wisdom with their clients worldwide.

Completely support contrast and brightness adjustment

The contrast and brightness of the LCD are adjusted through the local bit (LB). The user can control the increase/decrease of the contrast and brightness by writing "1" into the special LB register in program, without the need to adjust them by means of jumper switch or potentiometer.

Rich components library resources

Facilitate in making beautiful configuration interfaces. The components libraries can meet design requirements in most cases. If a customer has special requirement, he can build own graph library with the drawing tools of the software.

Digital Photos/Corporate LOGO Import

The software supports the import of multiple Windows image formats, such as JPEG, GIF and BMP: bit-mapped images and vector-based images, to meet different design requirements. The user can import their own logo or other images.

Supporting all fonts of the Windows platform

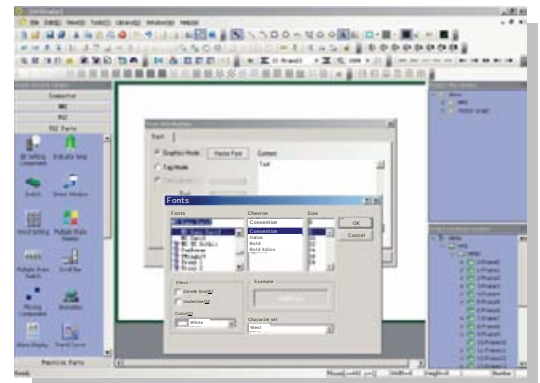
In "graphic mode", static text can be displayed in any fonts supported by the windows system on the configuration interface. The user has more choice for fonts now.

Recipe editing function

Providing 256K Words recipe memory, without any loss upon power failure, facilitating the setting and modification of initial values of the equipment, capable of providing multiple different recipes for the controller.

Perfect event log function

It can store records of events occurred during production, without any loss upon power failure, facilitating invocation anytime; if necessary, this function can be used to learn the operational history of the equipment and improve the design of the process flow.



Bitmap image

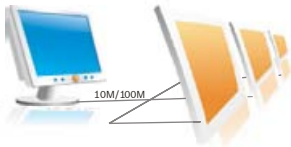


Vector graph



C Control & Operation Center

Simple and efficient functions



Learn compiling macro commands in ten minutes

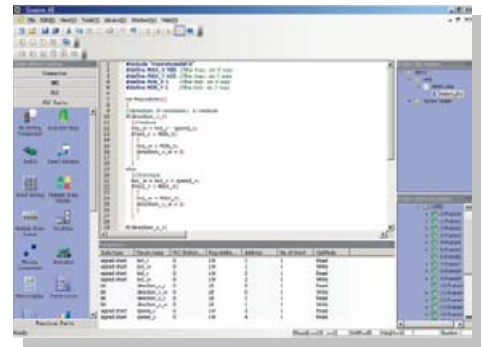
Macro codes compatible with standard C language can be triggered in multiple methods, featuring powerful function and flexible use.

In the past

Most HMIs in the market use respectively defined script languages, lack of versatility, which are hard to learn since there is no sufficient reference resources, and furthermore they cannot be implanted into other HMI Panels.

Present

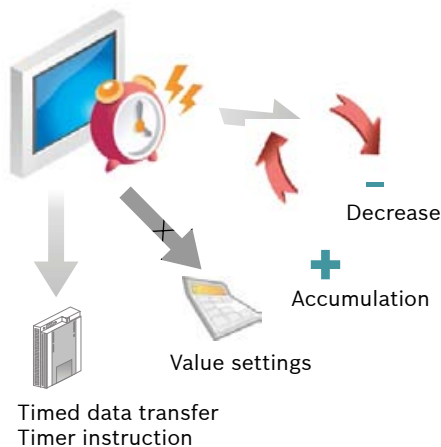
The HMI software provides unique macro instruction compilation fully compatible with the standard C language. If you are familiar with the C language, you can learn how to compile macro instructions in ten minutes. The rich reference documents, powerful function, and easy portability greatly enhance the macro instruction function of the HMI.



Powerful online networking and synchronous communication function and rapid processing speed have simplified the complicated process flow design.

Powerful timer function

- The timer of HT6x00 can implement the timing of a minimum of 100 ms, featuring accurate timing.
- Configured with multiple functions such as timed data transfer, value settings, accumulation, decrease, and timed macro instruction.
- Multiple trigger modes such as register trigger and initialization trigger, to facilitate users in implementing flexible configuration programming.



Customizable startup LOGO window

Different from other HMIs which do not have any screen display upon startup, the HT6x000 can immediately display a user-defined LOGO upon power-on until the configuration window finishes startup, lasting about five seconds. The user can freely edit and modify the startup window.



HT6x00 Configuration Software

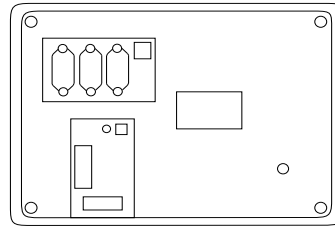
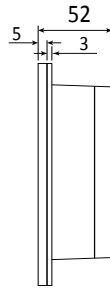
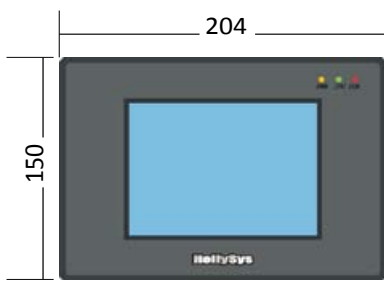
Other Configuration Software

HT6000 Series HMI -- Technical Specification



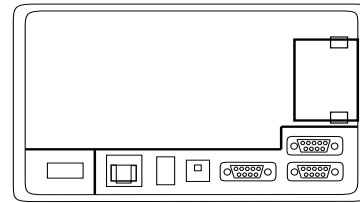
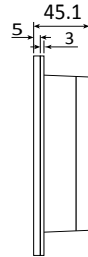
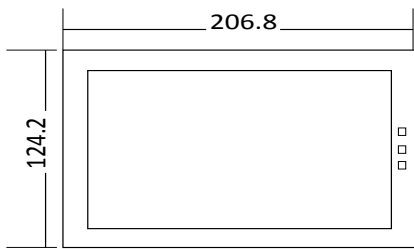
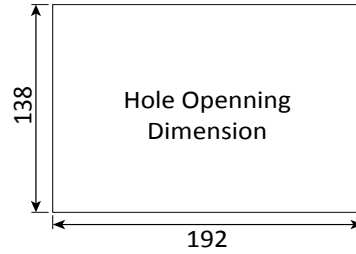
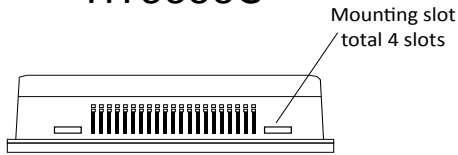
HollySys HMI Touch 6x000 Series	HT6600C	HT6700T	HT6A00T	HT6A00TE
FEATURES				
Display Size	5.6" TFT	7" TFT (16:9)	10.4" TFT	10.4" TFT (211.2 x 158.4mm)
Resolution	320 x 234 pixels	800 x 480 pixels	640 x 480 pixels	640 x 480 pixels
Display Color	65536 colors	65536 colors	65536 colors	65536 colors
Backlight	LED	LED	2 CCFL	2 CCFL
Luminance	300 cd/m ²	300 cd/m ²	400 cd/m ²	400 cd/m ²
Touch Panel	4-wire precision resistance Grid (Surface Hardness 4H)	4-wire precision resistance Grid (Surface Hardness 4H)	4-wire precision resistance Grid (Surface Hardness 4H)	4-wire precision resistance Grid (Surface Hardness 4H)
Backlight Lifespan	50,000 hrs	50,000 hrs	50,000 hrs	50,000 hrs
Processor	32-bit 400MHz RISC CPU	32-bit 400MHz RISC CPU	32-bit 400MHz RISC CPU	32-bit 400MHz RISC CPU
Memory	8MB FLASH / 16M SDRAM	8MB FLASH / 16M SDRAM	8MB FLASH / 16M SDRAM	8MB FLASH / 16M SDRAM
Receipe Memory & RTC	256KB & Real-time clock	256KB & Real-time clock	256KB & Real-time clock	256KB & Real-time clock
Communication Port	2x Serial COM port RS232/485/422	2x Serial COM port RS232/485/422	2x Serial COM port RS232/485/422	2x Serial COM port RS232/485/422
Printer Port	1x DB15	1x DB15	1x DB25	1x DB25
Program Download	1x USB Slave port	1x USB Slave port	1x USB Slave port	1x USB Slave port or Ethernet port
Ethernet	---- NOT SUPPORTED ---	---- NOT SUPPORTED ---	---- NOT SUPPORTED ---	YES - RJ-45 port - 10/100M
ELECTRICAL SPECIFICATIONS				
Current Consumption	4W @ 24VDC	8W @ 24VDC	10.8W @ 24VDC	10.8W @ 24VDC
Input Range	12 ~ 28VDC	12 ~ 28VDC	21VDC ~ 28VDC	21VDC ~ 28VDC
Power loss allowed	< 5ms	< 5ms	< 5ms	< 5ms
Insulation Resistance	> 50MΩ @ 500VDC	> 50MΩ @ 500VDC	> 50MΩ @ 500VDC	> 50MΩ @ 500VDC
Insulation Endurance	500 VAC 1 minute	500 VAC 1 minute	500 VAC 1 minute	500 VAC 1 minute
PHYSICAL CHARACTERISTIC				
Enclosure Color and Material	Black or ABS material	Black or ABS material	Deep Grey or ABS material	Deep Grey or ABS material
Dimension	204 x 150 x 52mm	206.8 x 124.2 x 45.1mm	310 x 230 x 54mm	310 x 230 x 54mm
Cutout Size	192 x 138 mm	193.5 x 112.5 mm	298 x 218 mm	298 x 218 mm
Weight	0.85kg	0.7kg	1.67kg	1.67kg
ENVIRONMENTAL CHARACTERISTIC				
Operating Temperature & Humidity	0 ~ 45 °C, 10~90%, non-condensing	0 ~ 45 °C, 10~90%, non-condensing	0 ~ 45 °C, 10~90%, non-condensing	0 ~ 45 °C, 10~90%, non-condensing
Storage Temperature & Humidity	-10 ~ 60 °C, 10~90%, non-condensing	-10 ~ 60 °C, 10~90%, non-condensing	-10 ~ 60 °C, 10~90%, non-condensing	-10 ~ 60 °C, 10~90%, non-condensing
Shock/Vibration Test	10 ~ 25Hz (X,Y,Z direction, 2G, 30mins)	10 ~ 25Hz (X,Y,Z direction, 2G, 30mins)	10 ~ 25Hz (X,Y,Z direction, 2G, 30mins)	10 ~ 25Hz (X,Y,Z direction, 2G, 30mins)
Cooling Methods	Natural Air Cooling	Natural Air Cooling	Natural Air Cooling	Natural Air Cooling
PRODUCT CERTIFICATION				
Environment IP Protection	IP65 (front panel)	IP65 (front panel)	IP65 (front panel)	IP65 (front panel)
CE Compatibility	EN61000-6-2:2005, EN61000-6-4:2007	EN61000-6-2:2005, EN61000-6-4:2007	EN61000-6-2:2005, EN61000-6-4:2007	EN61000-6-2:2005, EN61000-6-4:2007
FCC Compatibility	Certify to meet FCC Class A	Certify to meet FCC Class A	Certify to meet FCC Class A	Certify to meet FCC Class A

HT6000 Series HMI -- DIMENSION



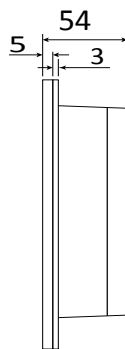
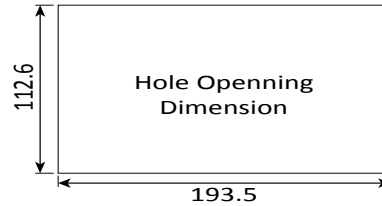
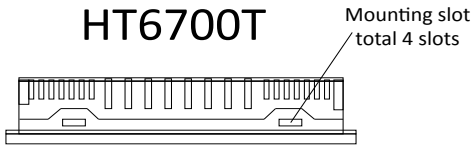
HT6600C

units: mm



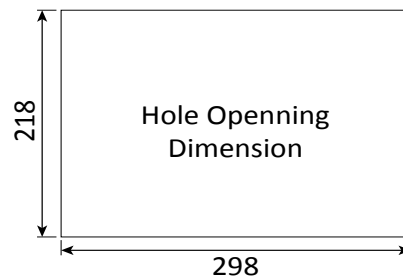
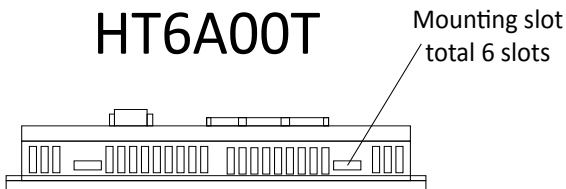
HT6700T

units: mm



HT6A00T

units: mm



HD2400L Text Display HMI - Dimension



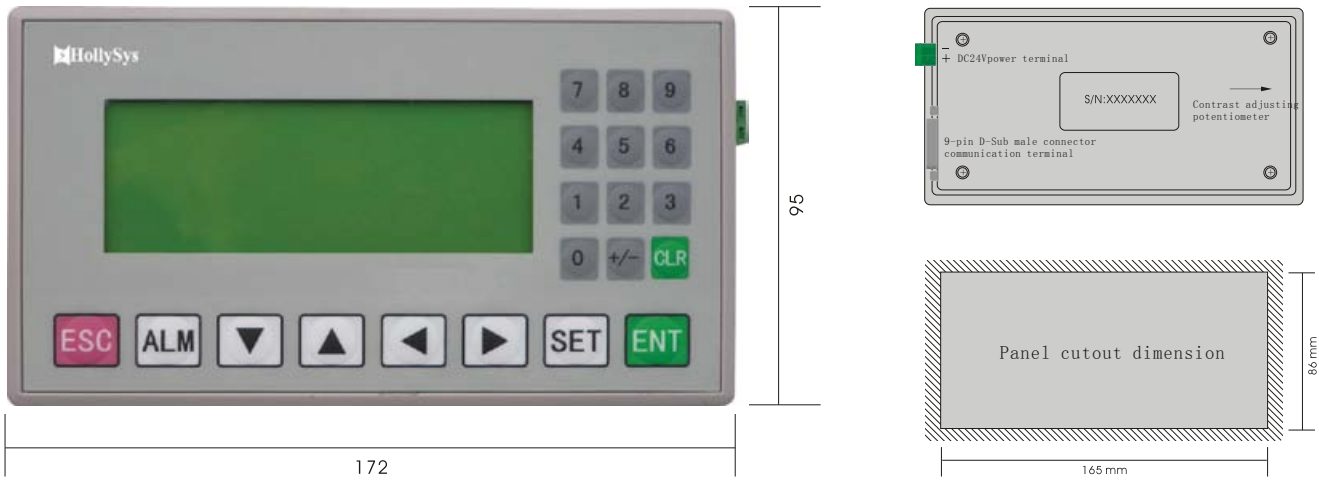
HD2400L is a product specially developed for low-end markets. It adopts back-lit STN LCD display with a 192 x 64 resolution of 192 x 64 pixels. It supports the display of 4 lines of characters (24 English letter per line or 12 Chinese characters). It adopts the durable thin-flim push-button switch as the customizable functional key and provides a small keypad for numeric input, which makes parameter modification convenient. The programming software features powerful functions and easy operation, supports advanced functions such as XY graphs and bar graphs, or is directly embedded with BMP images. It is the best choice for low-cost Control equipment.



HD2400L

- Display color: monochromatic
- Resolution: 192 x 64
- STN monochromatic display

HD2400L Text Display HMI - Dimension



Display	4.3" STN LCD display
Resolution	192 x 64 pixels (supporting the display of 4 lines, 24 English char per line or 12 UTF char per line)
LCM life time	Greater than 50,000 hours at 25±2 °C, 65 ±10% RH
Brightness	60 cd/m ²
Color	Monochromatic
Contrast	Adjustable by potentiometer
Backlight	Long service life yellow/green LED
CPU	8-bit processor
Memory	64KB Flash ROM
COM port	COM0: PC RS232 & PLC RS485/422 & PLC RS232
Function key	20 key, customizable (including 10 numeric input keys)
Printer port	N/A
Allowable power failure	Within 20ms
Power source	21 ~ 28VDC, Max. 150mA @ 24VDC
Interference immunity test	Voltage 1500Vp-p, pulse cycle 1 μs duration 1s
Dielectric strength	500VAC @ 1min
Isolation resistance	Exceed 10 M at 500VDC
Vibration endurance	10 to 25Hz (X, Y, Z direction, 2G, 30 mins.)
Continuous vibration	Max. 0.5G (X,Y,Z direction)
IP protection rating	IP65 front panel
Operating temperature	0 ~ 50 °C
Storage temperature	-20 °C ~ 70 °C
Enclosure	Engineering plastic ABS
Dimension (W x H x D)	172 x 95 x 30 mm
Display size (W x H)	101 x 36 mm
Panel cutout dimension	165 x 86 mm
Cooling method	Natural cooling air
Weight	0.3 kg
CE	EN61000-6-2: 2005, EN61000-6-4: 2007



International Business

HollySys (Asia Pacific) Pte Ltd

Address: 200 Pandan Loop, #08-01
Pantech 21, Singapore 128388
Tel: +65 6777-0950
Fax: +65 6777-2730

<http://www.hollysys.com.sg>
Email: sales@hollysys.com.sg

Beijing HollySys Group

Beijing HollySys Co., Ltd.
Beijing HollySys Automation & Drive Co., Ltd.

Address: Di Sheng Middle Road, No. 2
Economic-Technological Development Area
100176 Beijing, P.R. China
Tel: +86 10 5898-1000
Fax: +86 10 5898-1100

Hangzhou HollySys Automation Co., Ltd.

Address: North No.1, No 19 Road,
Xiasha Economic and Technological Development Zone,
Hangzhou, Zhejiang, 310018, P.R. China
Tel: +86 571 8163-3800
Fax: +86 571 8163-3700

<http://www.hollysys.com>

Automation Technology For Better Work, Life, and Environment

For many years, the HollySys name has stood for quality and reliability. HollySys proudly offers a wide range of automation and control products from PLCs to DCS to help you find the solution for any industrial automation and process control application. We are the global supplier of choice for innovative technology backed by the highest level of service and support. When you need products and solutions you can rely on, choose HollySys.